

Together, we can!

Central Oregon Mask Makers

— Original Pleated Mask Instructions —

(With Nose Wire & Filter Pocket)

Thank you for joining the movement! Our community needs our help during this global pandemic and we are here to help.

Together, we can make a difference by sewing and making items that help to supplement the tight supply of personal protection equipment for our brave medical workers and vulnerable community members.

This is the first of the recommended patterns that we are asking for help in making. It is taken from the incredible work being done at St. Joseph Hospital in Denver..

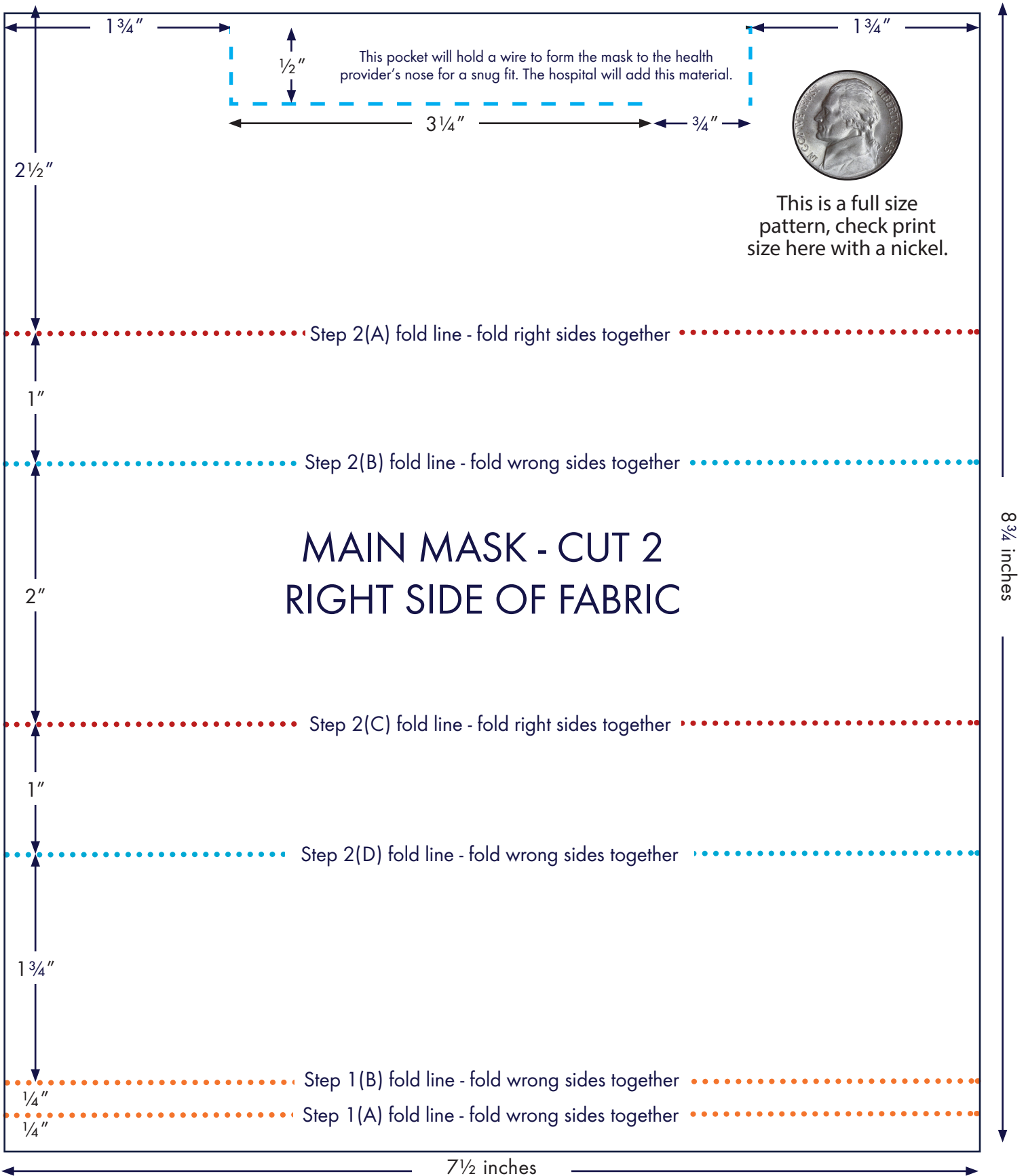
Overview

Material:

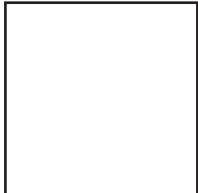
- 100% Cotton, high thread count, tight weave (pillow cases, sheets, quilting fabric)
- Light colors are preferred but patterns can be fun.
- Please no offensive or divisive symbols/patterns! Keep it fun for all!
- No Elastic Straps (Most elastic has latex or no guarantee of being latex free)

Sewing:

- Please pre-wash and dry fabric before sewing
- 1/4" Seam Allowance, Unless Specified
- Cotton Thread
- Straps can be bias tape or made using the same fabric.



BEFORE CUTTING check that your print out is at 100% scale on 8 1/2" by 11 paper. The box to the right should measure exactly 1 inch square.



Material:

- 100% Cotton, high thread count, tight weave (pillow cases, sheets, quilting fabric)
- Light colors are preferred but patterns can be fun.
- Please no offensive or divisive symbols/patterns! Keep it fun for all!
- No Elastic Straps (Most elastic has latex or no guarantee of being latex free)

Sewing:

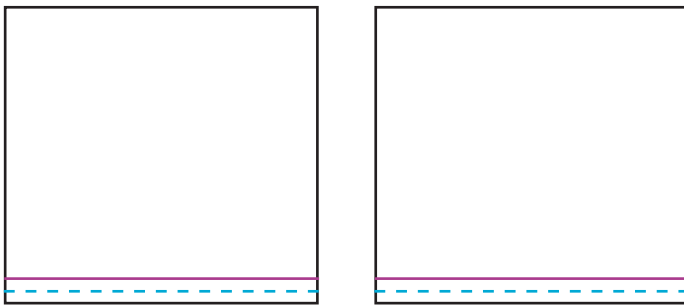
- Please pre-wash and dry fabric before sewing
- 1/4" Seam Allowance, Unless Specified
- Cotton Thread
- Straps can be bias tape or made using the same fabric.

CUTTING INSTRUCTIONS:

1. Cut two mask rectangles using the template (7½" x 8¾").

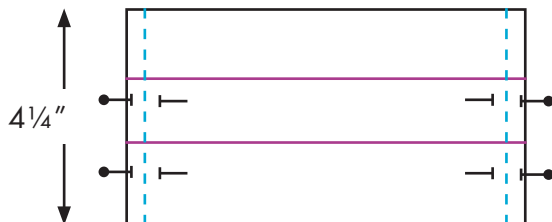
SEWING INSTRUCTIONS:

1. On each piece, fold toward the wrong side of the fabric on the orange dotted lines (¼"). Then stitch the seams on both peices as shown below using scant ¼" or ⅛" seam.



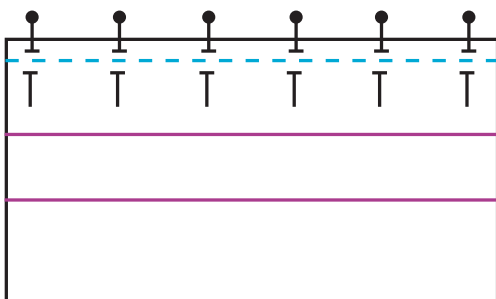
NOTE: Diagrams are not to scale - pink line shows where fabric is folded under to create a clean seam.

2. On each mask piece, mark your pleat fold lines with a fabric pencil (These are the red and blue dotted lines noted in the patttern). Now fold and iron each pleat with red dotted lines folding the right side of fabric together and blue dotted lines folding the wrong side of fabric together. Stitch up sides with ¼" seam allowance.

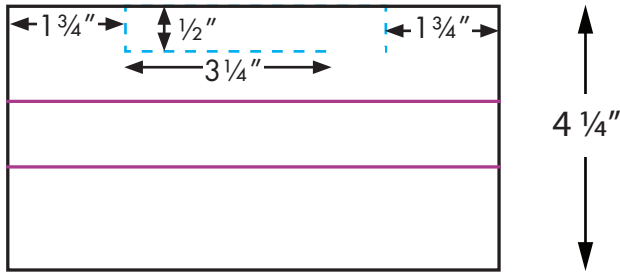


You should have two of these after step 3 with pins removed.

3. Place the mask pieces on top of eachother, right sides together and raw edges at the top. Stitch one seam all the way across the top with a quarter inch seam. Remove pins.

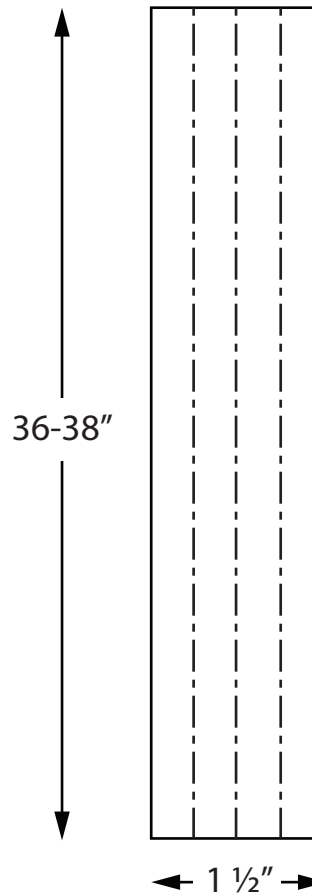
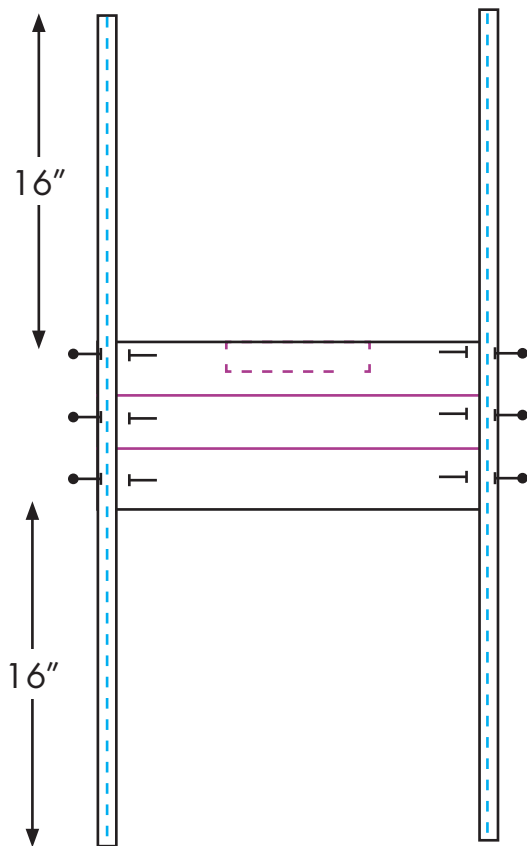


4. Open the mask along the new seam, wrong sides together and press the mask flat. Mark the nose wire pocket with a fabric pencil on mask in the location shown on the pattern diagram. The wire pocket will be a 4" by 1/2" box, with a 3/4" opening at one side on the bottom. Stitch along the three lines as shown in blue below.



Please review pattern measurements and location of stitch before completing this step. Be sure to leave the 3/4 inch opening on one side so the nose wire can be added to the mask by the hospital.

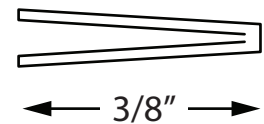
5. Pin 36 inches of 1/2" bias tape to either side of the mask, so 16" ties are available at the top and bottom. Stitch along the bias tape and through both layers of the mask to complete. Reinforce the stitching where the mask and straps come together at all four corners.



Making Straps

1. Cut strips of fabric, does not have to be on the bias.
1 1/2 Wide x 36-38" Long
2. Fold in half length-wise and iron
3. Fold each side in toward center and iron
4. Fold along center and iron again.

The strap cross section should look like this:



6. **Finished!**
Please collect your completed masks in a zip lock bag or other plastic bag that can be tied closed like a garbage bag. We are working on the logistics of pick up or drop off. Please check the Central Oregon Mask Makers Facebook page for updates and details.

Awesome!
Thank you.